



PRODUCT CATALOG
**OUTDOOR
BLINDS**

 [softhomesg](#)

 [softhomesg](#)

 sales@softhome.sg

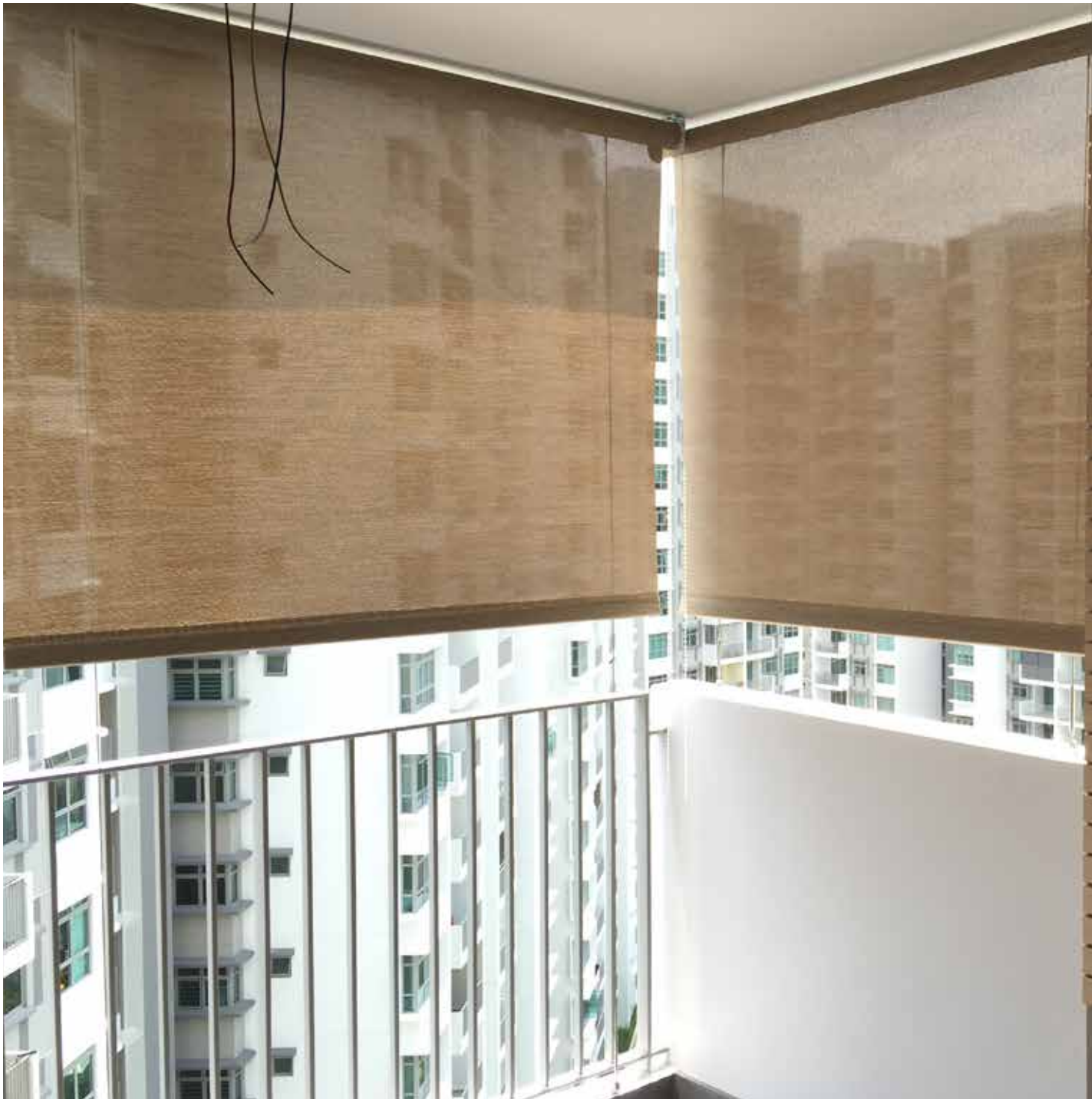
www.softhome.sg



CONTENTS

OUTDOOR BLINDS

- + FABRIC SELECTION
- + FABRIC SPECIFICATIONS
- + MECHANISM
- + MAINTENANCE
- + OPTIONAL ADD-ONS
- + PROJECTS



OUTDOOR BLINDS

www.softhome.sg



FABRIC SELECTION



COLOURS REPRODUCE TO CLIENT
MAY VARY FROM THE ACTUAL COLOUR
DUE TO THE LIMITATIONS OF DYEING PROCESS

COMPOSITION: RN001-RN003, RN005
30% POLYESTER, 70% PVC

RN301, RN901-RN903
20% POLYESTER, 73% PVC

FLAMMABILITY: USA/NFPA 701-99
SMALL & LARGE SCALE

FABRIC WIDTH: 3000MM (118")

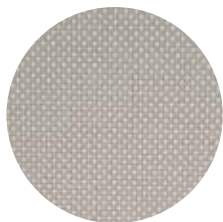
FABRIC WEIGHT: 410GM ±5%/SQM

OPENESS FACTOR: AVERAGE 5%

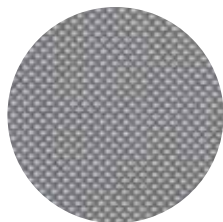
FINISH: ULTRA SONIC CUTTING



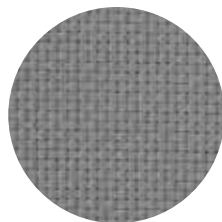
WHITE
RN001



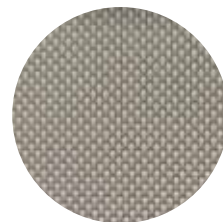
BEIGE
RN002



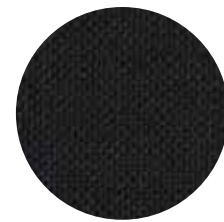
GREY
RN003



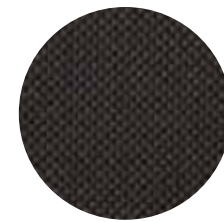
STONE
RN301



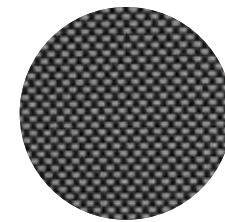
BEIGE GREY
RN005



BLACK
RN901



BROWN
RN902



CHARCOAL
RN903



FABRIC SPECIFICATIONS



Fire Retardant



UV Protection



Available as Vertical Blinds

DESCRIPTION	RESULT	TEST STANDARD
COMPOSITION	30% POLYESTER 70% PVC	
OPENESS FACTOR	5%	
WIDTH	200 CM 250 CM 300 CM	
PATTERN	BASKETWEAVE 2x2	
FIRE CLASSIFICATION	FR (USA)	NFPA 701-2010
YARN COUNT	WARP 48/INCH + 5% WEFT 48/INCH + 5%	ISO 7211/2
WEIGHT	400 GR/M ² + 5%	ISO 2286-2
THICKNESS	0.55 MM + 5%	ISO 2286-3
BREAKING STRENGTH	WARP 150 daN/5 CM WEFT 160 daN/5 CM	ISO 1421
TEAR STRENGTH	WARP 8.8 daN WEFT 7.3 daN	ISO 4674
COLOR FASTNESS TO LIGHT	8	ISO 105 : B02
MOULD RESISTANCE	A	ISO 846
MANGEMENT QUALITY SYSTEM		ISO 9001
ENVIRONMENTAL MANAGEMENT SYSTEM		ISO 14001



MECHANISM

+ BENTHIN HEAVY DUTY
SPRING CHAIN

+ BENTHIN OUTDOOR
ROLLER BLINDS

+ OPTION 1

+ OPTION 2

+ SUMMARY



WIDTH

MAX 3.00 M

HEIGHT

MAX 3.50 M

MAXIMUM AREA

9 M

BRAKE CAPACITY

MAX 8.0 KG

TUBE DIAMETER

Ø52 MM

TUBE THICKNESS

2.0 MM

BRACKET

72 X 84 MM

THE BENTHIN HEAVY DUTY SPRING CHAIN BLIND SYSTEM IS THE SOLUTION FOR ROLLER BLINDS WITH A LARGE SURFACE AREA OF UP TO 9M² AND A MAXIMUM BLIND WIDTH OF UP TO 3000MM. IT CAN BE FITTED WITH HEAVY FABRICS AND THUS IS AN IDEAL DESIGN OPTION FOR MODERN ARCHITECTURE WITH LARGE WINDOWS.

CONTROL OPTION

A SMOOTH-RUNNING CHAIN DRIVE CAN BE OPERATED WITH A BALL CHAIN MECHANISM. AUXILIARY SPRINGS OR PLANETARY GEARS ARE USED TO ENSURE THAT EVEN HEAVY BLINDS CAN BE OPERATED EFFORTLESSLY.

SIMPLE AND SECURE INSTALLATION

SPECIAL BRACKETS ARE INDIVIDUALLY SECURED ONTO THE WALL OR CEILING TO HELP SUPPORT AND SPREAD THE WEIGHT OF THE BLINDS EQUALLY. THESE BRACKETS CAN ALSO BE USED TO POSITION THE BLINDS ACCURATELY IN DIFFERENT CONDITIONS.



MECHANISM

+ BENTHIN HEAVY DUTY
SPRING CHAIN

+ BENTHIN OUTDOOR
ROLLER BLINDS

+ OPTION 1

+ OPTION 2

+ SUMMARY

FRONT



BACK



PROS

- + DURABLE COMPARED TO REGULAR SYSTEM, THE BENTHIN MECHANISM CAN WITHSTAND MORE RESISTANCE CAUSED BY WIND.
- + ABLE TO ADJUST TENSION OF STAINLESSSTEEL CABLE, FLEXIBLE IN WINDY CONDITIONS.
- + EASY TO MAINTAIN.
- + GAP IN BETWEEN 2 BLINDS ARE SMALLER, APPROX 3-4CM

CONS

HIGHER COSTS COMPARED TO REGULAR ROLLER BLIND SYSTEM.



MECHANISM

+ BENTHIN HEAVY DUTY
SPRING CHAIN

+ BENTHIN OUTDOOR
ROLLER BLINDS

+ OPTION 1

+ OPTION 2

+ SUMMARY

FRONT



BACK



PROS

- + DURABLE COMPARED TO REGULAR SYSTEM, THE BENTHIN MECHANISM CAN WITHSTAND MORE RESISTANCE CAUSED BY WIND.
- + ABLE TO ADJUST TENSION OF STAINLESSSTEEL CABLE, FLEXIBLE IN WINDY CONDITIONS.
- + EASY TO MAINTAIN.

CONS

- + SLIGHTLY BULKIER BOTTOM BAR
- + GAP IN BETWEEN 2 BLINDS ARE BIGGER, APPROX 5-6CM



MECHANISM

+ BENTHIN HEAVY DUTY
SPRING CHAIN

+ BENTHIN OUTDOOR
ROLLER BLINDS

+ OPTION 1

+ OPTION 2

+ SUMMARY

OPTION 1



OPTION 2



50MM TUBE

SS CABLE

BOTTOM BAR

TURNBUCKLE

D-BRACKET



MAINTENANCE

- + **REGULAR MAINTENANCE IS THE EASIEST WAY TO ENSURE THE QUALITY OF YOUR BLINDS BY USING A DUSTER OR A VACUUM TO REMOVE OUTER DUST.**
- + **SPOT CLEANING SUCH AS BIRD DROPPINGS ON THE BLINDS CAN BE REMOVED BY USING A DAMPEN CLOTH WITH WATER AND MILD DETERGENT SOLUTION.**





OPTIONAL ADD-ONS

WHY CHOOSE BENTHIN?

- + TRADITIONAL OUTDOOR BLINDS ARE DONE WITH A INDOOR ROLLER BLINDS SYSTEM. THE FABRICS, THOUGH ARE OUTDOOR SPECIFICATIONS, BUT THE HOLDING STRENGTH OF THE INDOOR MECHANISM ARE WEAKER COMPARED TO THE GERMAN MADE BENTHIN.
- + INDOOR MECHANISM UNABLE TO HOLD THE WEIGHT, CAUSING THE BLIND TO FAIL, AT THIS STAGE THE BLIND IS UNABLE TO ROLL UP OR DOWN AND WILL ALWAYS STAY IN THIS POSITION. MAINTENANCE BY THE VENDOR IS REQUIRED.
- + OUTDOOR BLINDS CAN BE MOTORISED, ESPECIALLY USEFUL FOR PLACES WITH HIGH CEILING, E.G LOFT UNITS FOR HDB MANSIONETTE.





OUTDOOR BLINDS

www.softhome.sg





WHY SOFTHOME?

BECAUSE YOU WILL NEVER SEE EASILY TORN FABRIC OR RUSTY AND BROKEN PARTS AS SOFTHOME GIVE YOU THE ASSURANCE BY PROVIDING QUALITY BLINDS TO YOU.





SELECTION STEPS

STEP 1 - FABRIC SELECTION



STEP 2 - SELECTION OF MECHANISM



STEP 3- FURTHER CUSTOMISATION

REACH OUT TO OUR SLES PERSON FOR
MORE INFORMATION



PAST PROJECTS



SUITES @ GUILLEMARD
(CONDOMINIUM)



WATERFRONT ISLE
(CONDOMINIUM)



PAST PROJECTS



DETACHED HOUSE
(LANDED)



LUSH ACRE
(CONDOMINIUM)

